

## ANIMAL EXHIBITS

- 1 ARCTIC ENCOUNTER® Seals, polar bears
- 2 TOWER RIDGE Giraffe feeding experience (*paid, seasonal*)
- 3 AFRICA! Grant's zebras, Masai giraffes, wildebeests, watusi cattle, ostriches, cheetahs and more
- 4 WOLF CABIN Grey wolves
- 5 THE RESCUE ROOST Bald Eagles
- 6 CASSOWARY CROSSING Cassowaries
- 7 AVIARY/KEET RETREAT Birds from around the world, seasonal bird feeding experience, sloth, koala and more
- 8 PRIMATE FOREST Lemurs, monkeys, gibbons, red pandas and more
- 9 GREAT APES Western lowland gorillas, orangutans
- 10 PHEASANTRY Outdoor viewing of birds
- 11 CONSERVATORY Galapagos tortoise winter viewing
- 12 AQUARIUM Sharks, rays, sea turtle, eels, touch tank and fish from around the world
- 13 PENGUIN BEACH African Penguins and waterfowl
- 14 REPTILE HOUSE Snakes, lizards, saltwater crocodile and more
- 15 PROMEDICA MUSEUM OF NATURAL HISTORY Komodo dragon, coconut crab, sturgeon, pre-historic sculptures and more
- 16 NATURE'S NEIGHBORHOOD Goats, tamandua, paca
- 17 TIGER TERRACE Amur tiger, snow leopards, cougars, dingos and maned wolves
- 18 FLAMINGO KEY Flamingos, Spoonbills, ducks and pelicans
- 19 TEMBO TRAIL African elephants, hippos, rhino, meerkats, otters, Tasmanian devils, yaks, camels and brown bears

## TAME YOUR HUNGER

### NORTH SIDE

- A || Timberline Bakery: baked goods, donuts, fudge, beverages
- B || Dippin' Dots® Cart
- C || Northern Ice: cold beverages, frozen treats and carnival snacks
- D || Arctic Point Beverage Station: snacks, beverages
- E || Karoo Snack Stand: pizza, fried snacks and cold beverages
- F || Kibanda Beverages: adult and other cold beverages
- G || Karamu BBQ: burgers, sandwiches and salads

### SOUTH SIDE

- H || Dippin' Dots® Cart
- J || Bird Feeder: ice cream treats, snacks, beverages
- K || Beastro Beer and Wine Garden: craft beers, gourmet snacks and family-friendly games
- L || Big Blue Express: snacks and bottled beverages
- M || Carnivore Café: sandwiches, fried sides and kids lunches
- N || Polar Chill: cold beverages and carnival snacks
- O || Eats on the Patio: hot sandwiches, pizza and salads
- P || Tembo Trail Dippin' Dots® Cart
- Q || Cafe at the Museum: craft beers, coffee bar, sweet treats and small bites

The Zoo proudly serves **Coca-Cola** CLASSIC

## SOUVENIRS & RENTALS

- North Star Trading Post with Fudge Shoppe:**  
Clothing, plush, fun toys and one-of-a-kind gift items
- Bear Essentials Rentals (North side):**  
Buy sunscreen, sunglasses and hats. Rent strollers, wagons, wheelchairs and motorized scooters. *See reverse for pricing.*
- Mpingo Tree, Africa!:**  
Zoo gifts, souvenirs and Aerial Adventure Course necessities
- Treasure Cove, Aquarium:**  
Aquatic and Zoo gifts, plush and souvenirs
- Curio Shop:** Museum souvenirs
- Broadway Rentals (South side):**  
Buy sunscreen, sunglasses and hats. Rent strollers, wagons, wheelchairs and motorized scooters. *See reverse for pricing.*

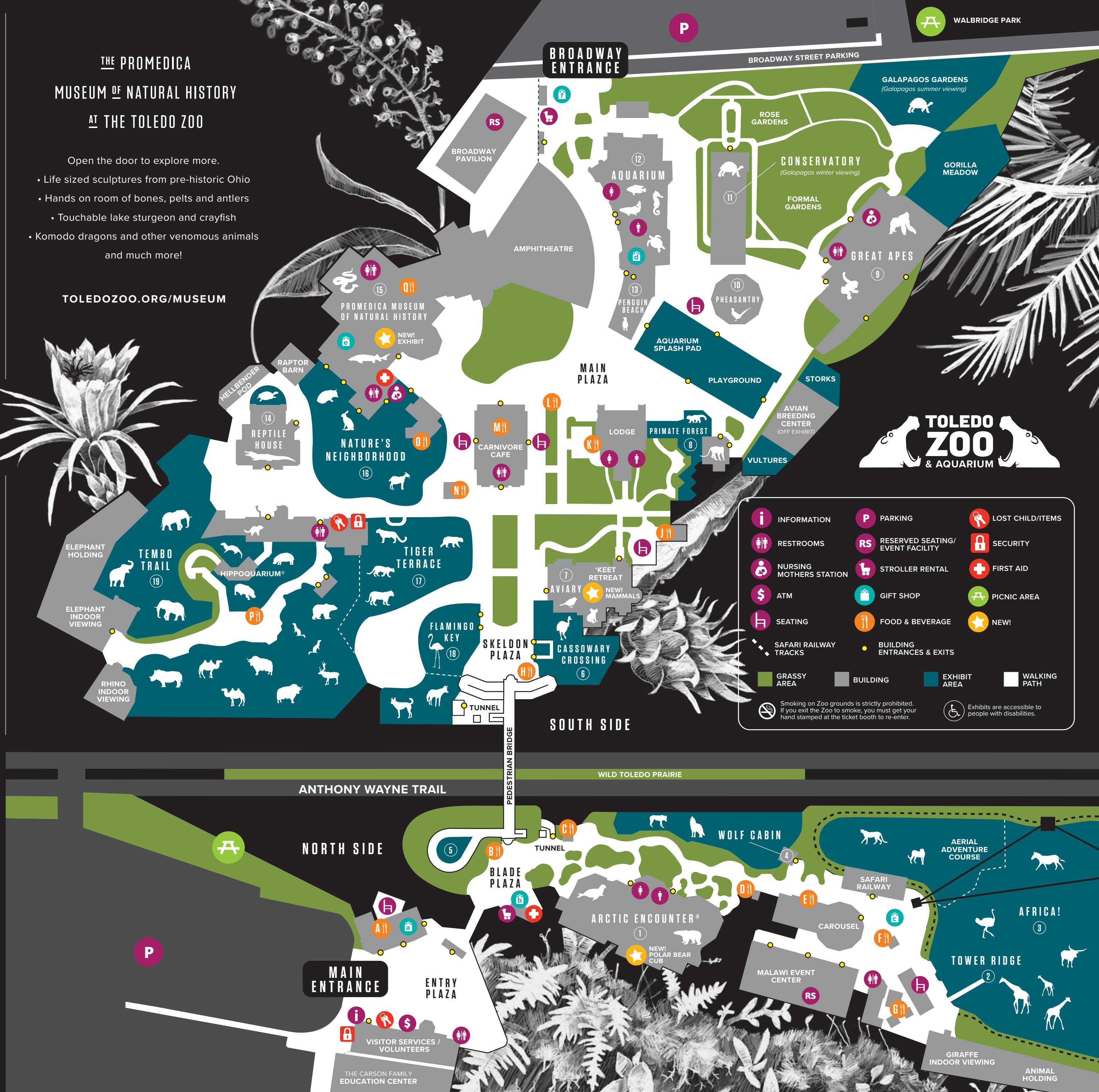
Hours of operation may vary due to season and weather conditions.

## THE PROMEDICA MUSEUM OF NATURAL HISTORY AT THE TOLEDO ZOO

Open the door to explore more.

- Life sized sculptures from pre-historic Ohio
- Hands on room of bones, pelts and antlers
- Touchable lake sturgeon and crayfish
- Komodo dragons and other venomous animals and much more!

[TOLEDOZOO.ORG/MUSEUM](http://TOLEDOZOO.ORG/MUSEUM)



	INFORMATION		PARKING		LOST CHILD/ITEMS
	RESTROOMS		RESERVED SEATING/ EVENT FACILITY		SECURITY
	NURSING MOTHERS STATION		STROLLER RENTAL		FIRST AID
	ATM		GIFT SHOP		PICNIC AREA
	SEATING		FOOD & BEVERAGE		NEW!
	SAFARI RAILWAY TRACKS		BUILDING ENTRANCES & EXITS		GRASSY AREA
	BUILDING		EXHIBIT AREA		WALKING PATH

Smoking on Zoo grounds is strictly prohibited. If you exit the Zoo to smoke, you must get your hand stamped at the ticket booth to re-enter.

Exhibits are accessible to people with disabilities.